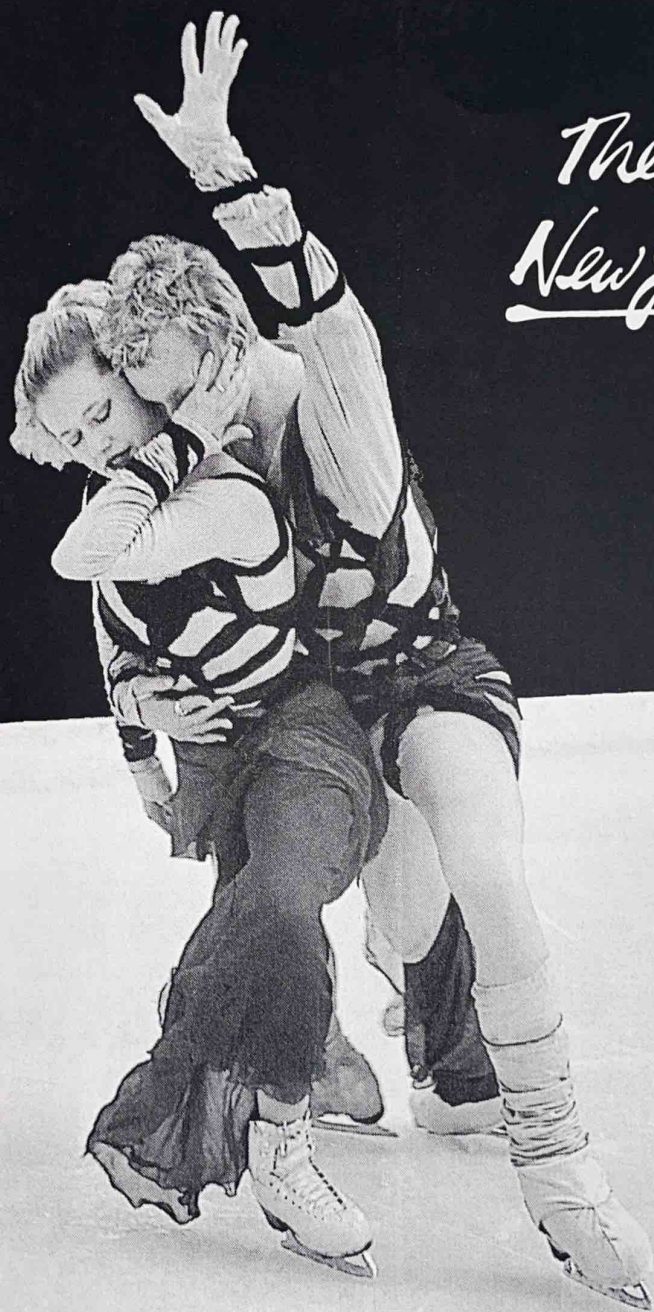


*Ice  
Theatre  
New York*



**HOME SEASON 2002**  
NOVEMBER 6, 7, 8, and 9, 2002

Sky Rink at Chelsea Piers | Pier 62 | 23rd Street & the Hudson River



## ABOUT ICE THEATRE OF NEW YORK

Ice Theatre of New York is dedicated to develop ice skating as a performing art through its performances and educational program. It has created an environment in which professional skaters from various backgrounds can collaborate with choreographers, musicians, writers, and visual artists to create and perform new works. Ice Theatre is the nation's first not-for-profit ice dancing ensemble to be awarded grants by National Endowment for the Arts, New York State Council on the Arts and NYC Department of Cultural Affairs as a dance company.

Founded by Moira North in 1984, the Company has created a repertory of over 60 works, including works by major modern dance choreographers such as Jacquelyn Buglisi, Ann Carlson, Laura Dean, Alberto Del Saz, Donlin Foreman, David Dorfman, Lar Lubovitch and Elisa Monte, as well as works by ice choreographers. The repertory ranges from 12-skater ensemble dances to solos, duets and trios, with music from classical to contemporary. Among renowned guest artists who have performed with Ice Theatre are Olympic Champion John Curry, Toller Cranston, Paul Wylie, Yuka Sato, Gary Beacom and Katherine Healy.

Some distinctive projects that Ice Theatre has participated in are Montreal Fashions on Ice, an annual show at Rockefeller Center featuring unique styles from Montreal, and Winter Solstice on Ice, a TV production shot in Finland and aired by A&E. Ice Theatre has been produced by major dance presenters including Boston's Dance Umbrella, Vermont's Flynn Theatre, Dancing in the Streets, Creative Time, First Night Annapolis, and in Europe. The Company also performs on proscenium stages in addition to the traditional rink settings.

Outreach programs include the *Lunchtime Concert Series* at the rink at Rockefeller Plaza, free to the public. Another program, *New Works and Young Artist Series* at Riverbank State Park, is dedicated to giving emerging choreographers and young performers an opportunity to present new works to audiences of school children from the area and to providing skating clinics for public school students from Harlem and Washington Heights. The Company has also performed and conducted master classes throughout the United States and Canada.



## A NOTE FROM THE DIRECTOR

*Skating: "...combines and surpasses the joys of flying and dancing; only in a certain type of a dream do we ever else attain a higher degree of the same ravishing experience of exultantly skimming the earth."*

**Ernest Jones**  
Biographer of Freud

*"The creative edge:... points to the direction in which Ice Theatre can play a unique role. This is not commercial skating, and yet it has a ready audience..."*

**Anna Kisselgoff, The New York Times**

Years ago, David White of Dance Theatre Workshop observed, "Audiences, like artists, are trapped into categories not of their own making." It seems to me from the responses of our audiences that they are not only open to but expecting new formats of ice performance... especially from us. This Home Season, we are proud to present new repertory works on ice by Jacquelyn Buglisi, Katherine Healy, David Liu & JoAnna Mendl Shaw, and Doug Webster. These works were rehearsed and performed at our summer residency at Jamestown Ice Arena this year, made possible by the New York State Council on the Arts.

Outside of the competitive arena of the Olympic Games or regional championships, audiences worldwide have known little of any forum in which the cultivation of artistic impression overrides the sole concentration on technical prowess as the *raison d'être* of ice performances. It was in recognition of this need, both for skaters and audiences, that Ice Theatre of New York was founded and continues to provide such a unique and important venues for skating artists.

From middle of the night rehearsals to outdoor performances in New York City and on the Bothnian Gulf in Finland to performance on stage in performing arts centers, Ice Theatre continues to pioneer the development of artistic skating.

Thank you for your continued interest and support.

— **MOIRA NORTH**



# Ice Theatre of New York

## 19th ANNUAL HOME SEASON PERFORMANCES November 6, 7, 8 and 9, 2002 at 7 PM

ARTISTIC DIRECTOR

Moira North

ASSOCIATE ARTISTIC DIRECTOR

Douglas Webster

ENSEMBLE DIRECTOR

Judy Blumberg

GENERAL MANAGER

Michiko Simanjuntak

THE ENSEMBLE

Joshua Babb, Eve Chalom, Kevin Curtis, Tyrrell Gene,

Eddie Gornik, Florentine Houdiniere, Daphne Johnson, Kimberly Navarro,

Breanne Scully, Alyssa Stith, David Tankersley and Susan Wilsey

GUEST ARTISTS

Lucinda Ruh (Nov 6)

Katherine Healy

David Liu

Roman Serov

Waka Watanabe (Dancer)

LIGHTING DESIGNER

David Lander

PRODUCTION MANAGER

Bruce Roberts

STAGE MANAGER

Mardi Jennings

## THE PROGRAM

### DEPARTURES

Choreography by Doug Webster

Music by Gustav Mahler

Costumes courtesy of Capezio

Performed by Eve Chalom, Florentine Houdiniere, Daphne Johnson, Kimberly Navarro,  
Alyssa Stith and Susan Wilsey

May we be courageous and know that there is a better place  
May we always reach for the hand that will lift us out of our suffering  
May we also remember to extend a hand to those who suffer  
Let us be compassionate to all souls, for then our wings may open  
And perhaps we will fly without fear and ascend in flight with angels

*In memory of Clarin Schwartz, a friend of Ice Theatre of New York who incorporated the Company  
pro bono in 1984, and was lost during the World Trade Center disaster.*

### TANGO

Choreography by Katherine Healy

Music by Jacob Gade, Isaac Albeniz & Victor Schertzinger

Performed by Katherine Healy

### GERSHWIN THEME

Choreography by JoJo Starbuck

Music by Gershwin

Performed by David Liu

### THIN ICE/ COMMON GROUND

Choreography by JoAnna Mendl Shaw & David Liu

Music by Paul Geiger

Costumes by Katherine McDowell

Performed by Alyssa Stith, David Tankersley, Susan Wilsey and Waka Watanabe  
*This work is made possible, in part, with commissioning funds from New York State Council on the Arts  
Based on Laban Movement scales (progression of movement organized around a series of  
fixed points in space and the transitions between those points), this choreography explores  
the delicate balance between stability and mobility and the common ground between  
dance and ice dance.*

### THE DREAME

Choreography by Jacquelyn Buglisi

Music by Franz Liszt

Costumes by A. Maria Giannini

Performed by Eve Chalom & Tyrrell Gene

*This work is made possible, in part, with commissioning funds from New York State Council on the Arts  
Through a series of movements incorporating the Graham technique and Buglisi's own  
inventive style, this romantic piece uses the energetic, rhythmic and momentous qualities of  
the music to create continuous lines of dramatic tension and suspended breaths.*

### THROUGH A GLASS, DARKLY

Choreography by Katherine Healy

Music by Camille Saint-Saëns

Costumes by Victoria Lyras

Performers:

The Apparition: Kevin Curtis

Representing Figure Skating: Breanne Scully

Florentine Houdiniere, Daphne Johnson, Alyssa Stith & Susan Wilsey

Representing Dance: Katherine Healy

"For now we see through a glass, darkly; but then face to face: now I know in part;  
but then shall I know even as also I am known." I Corinthians 13:12

Dedicated in loving memory to John Curry, September 9, 1949-April 15, 1994

Olympic and World Champion John Curry revolutionized the use of figure skating as an expressive and theatrical medium through his integration of pure skating technique and an aesthetic derived almost solely from classical ballet. He led the way for the formation and work of ensemble skating companies such as Ice Theatre of New York dedicated to the development of figure skating as a performance art. Curry was Healy's teacher and mentor from the time she was a young child. As a tribute to Curry's lifelong love for dance, Healy approached this work as a ballet that simply happens to take place on the ice, rather than on the stage.

### SHORT PROGRAM

Choreography by Viktor Kudriavtsev

Performed by Roman Serov

### MERCY (Nov 6)

Choreography by Robin Cousins

Music of Mercy from *The Prayer Cycle*

Performed by Lucinda Ruh

### COME AWAY WITH ME

Choreography by David Liu

Music by Shigeru Umebayashi

Performed by David Liu

"It's me... if I had another ticket... would you come away with me?"  
(from the film *In the Mood for Love*)

### ON THE TOWN

Choreography by Doug Webster

Music by Leonard Bernstein

Performed by Joshua Babb, Tyrrell Gene, Eddie Gornik, Florentine Houdiniere,  
Daphne Johnson, Kimberly Navarro, Alyssa Stith, David Tankersley and Susan Wilsey  
A playful reminiscence celebrating freedom & dance in New York.

### FINALE

***Program subject to change***

## About the Artists

**JOSH BABB** grew up in Harbour Grace, Newfoundland, Canada. He and his sister, Rebecca Babb, were the 1998 Canadian Games Bronze Medalists, the 1998 Junior Dance Champions of Canada, and Canadian National Team Members for three years. He competed for Canada at international events in Zagreb, Croatia, and in Oberstdorf, Germany. In 1999 he moved to Stamford, Connecticut, to train with World and Olympic coach Natalia Dubova. At present he is working in the tri-state area, choreographing for national and international competitors. This is Josh's fourth season with Ice Theatre of New York.

**JUDY BLUMBERG** (Ensemble Director) has been a presence in the figure skating world for the past 18 years in a variety of different roles: that of performer, coach, commentator, consultant, and inspirational speaker. Judy and former partner Michael Seibert are recognized worldwide as one of the most unique and innovative teams in the history of ice dancing. They were the five-time US Ice Dance Champions, three-time World Bronze medalists and two-time Olympic Team Members. They also hold numerous United States, International and World Professional Championship titles. Being inducted into the US Figure Skating Hall of Fame in 1996 was yet another memorable moment for this duo. More recently, however, Judy has completed her BS Degree at Hunter College concentrating in the area of Human Movement Studies, and has been busy creating new magic on the ice with friend and colleague, Doug Webster. One won't soon forget their breathtaking duet in the debut of Webster's and Shaw's *Appalachia Waltz* in June of 1997. Judy's dance expertise was crucial in translating Peter DiFalco's *Tango Images*, from the floor to the ice. Together, Judy and Doug, with their keen eye for detail and years of performing experience between them, co-direct the Ice Theatre of New York Ensemble. In addition to her work with Ice Theatre, Judy has served on the Board of Directors of the USFSA, the new Professional Skater's Cooperative, and the Athlete Advisory Council of the USOC. She is also proud to be a member of the Circle of Olympians involved in the NYC 2012 Olympic Bid.

**JACQUelyn BUGLISI** (Choreographer) has had more than twenty-five of her ballets presented and commissioned by the John F. Kennedy Center for the Performing Arts, Jacobs Pillow Dance Festival, The Joyce Theater and the '99 Melbourne International Festival, and performed on stage and television throughout the US, Canada, Europe and Asia. As a principal artist with the Martha Graham Dance Company for 13 years, she is featured in *Conversations with Martha Graham* and *Trailblazers of American Modern Dance* for her Denishawn interpretations. She was co-founder of Italy's first Contemporary Dance Company and school in Rome and Spoleto and founding member of Joyce Trisler DansCompany. Committed to arts in education, she is Chair of the Modern Department at the Alvin Ailey School, and serves on the faculties of The Juilliard School and the Martha Graham School. Buglisi was a Master Artist in Residence at Atlantic Center for the Arts in '99, on



the NJ State Council for the Arts in '98, and has received the Fiorello LaGuardia Award for Excellence in the Field of Dance, as well as grants for choreography from NYSCA and the National Endowment for the Arts. Recent commissions include North Carolina Dance Theater, American Repertory Ballet, Boston Conservatory of Music, Ailey II and Ice Theatre of New York. Ms. Buglisi was invited to present her Company in the Juilliard Theater at Lincoln Center in the Emerging American Masters series and hosted two Metro Arts 13 programs, featuring her Company. She co-directs the Buglisi/Foreman Company with Donlin Foreman.

**EVE CHALOM** holds a BA from University of Michigan in Philosophy and English. Trained as an ice dancer, Eve was a US National silver medallist and represented the US at the World Figure Skating Championships in 1997 and 1999. From 1996 to 1998 Eve toured with Stars on Ice and Tom Collins' Tour of World Champions. Eve has taught ice dance in Dallas and is currently teaching at Detroit Skating Club and at the Ice Cube in Ann Arbor. As a dancer, Eve trained in Flamenco, ballroom, tango, swing dance, modern and classical ballet and has performed with Alvin Ailey Modern Dance Company and Liz Lerman Dance Exchange.

**KEVIN MICHAEL CURTIS** (Apprentice) was born in Geneva, New York and then moved to Fairfax, Virginia at the age of one. He began skating at the age of 9 under Coach Juli McKinstry and since then has qualified for Nationals (Junior Olympics) as both a Juvenile and an Intermediate skater. He is now competing in Junior Men's freestyle under the training of Coaches Denise Cahill and Rob McBrien in Laurel, Maryland. He has also performed with the Washington Ballet and the Pittsburgh Ballet Company.

**TYRRELL GENE** started dancing at the age of three in his hometown of Wenatchee, Washington. Dancing, which was initially a form of therapy for his stroke-induced paralysis, led him into figure skating. For the past 13 years, Ty has trained as an ice dancer, and became a 5-time National competitor. He has continued his cross-training with his studies and performances of jazz, ballet, modern and ballroom dancing. Last year Ty relocated from Seattle, Washington to New York City to skate with Ice Theatre of New York.

**EDDIE GORNIK** was born and raised in Salt Lake City, Utah and is a 6-time US National competitor. He was privileged to have studied with coaches such as Frank Carroll, Irina Rodnina, Evelyn Kramer and Kathy Casey. Eddie held the lead role for Disney on Ice's *Toys' Story* from 1996 to 2001, and then joined the cast of Nancy Kerrigan's *Footloose on Ice* in Boston on November 2001. He also performed in the opening and closing ceremonies of the 2002 Olympics in Salt Lake City. This is Eddie's second year performing with Ice Theatre of New York.

**KATHERINE HEALY** (Guest Artist & Choreographer) was trained as both a skater and ballet dancer. She was a protégé of Olympic gold medalist John Curry, was

the subject of the children's book *A Very Young Skater*. She received her early dance training at George Balanchine's School of American Ballet, and at the age of 13, she won the silver medal at the Second International Ballet Competition in Jackson, MS. The following year, she became the youngest dancer to win the gold medal at the prestigious International Ballet Competition in Varna, Bulgaria. Following her success in competition, Healy was invited at the age of 15 to join the London Festival Ballet (now the English National Ballet) as Principal Dancer. In 1990 and 1991, she performed as principal ballerina with Les Ballets de Monte Carlo, and from 1991 to 1997, Healy danced as principal ballerina with the Vienna State Opera Ballet Company. She was also an international guest artist in Japan, Canada, and throughout Europe. Throughout her illustrious career as a ballerina, Healy never lost her love for – or talent – on the ice. She performed with the John Curry Skating Company, made appearances as a guest star in Scott Hamilton's *Celebration on Ice* in 1988, and in 1989 was featured skating and dancing on pointe in a pas de deux with Olympic gold medalist Robin Cousins on ABC's *Wide World of Sports*. After her retirement from dancing, Healy returned to professional figure skating, giving performances in the *Equal Challenge of Champions*, *An Evening with Champions* and with Ice Theatre of New York, among others. Healy is currently coaching and choreographing at Sport-O-Rama in Monsey, NY, and at Iceland in New Hyde Park, NY. She has coached a number of competitors in the New York area at the regional, sectional, junior national, and national levels.

**FLORENTINE HOUDINIÈRE**, born and raised in France, earned Gold at the French Junior National Championships in 1992 and competed in numerous international competitions. She was a member of the French National team for 5 years. In 1995 she turned professional, and has traveled internationally ever since. She was the lead role in the Holiday on Ice's 1999/2000 European Tour of Colours of Dance and was a principal skater of *Broadway on Ice* at the Andy Williams Moon River Theatre in Summer 2000. She performed as Anastasia in the US tour of *Anastasia on Ice*; Cruella De Vil in the Disney 15 show during the summer of 1997; and Belle in the 1996-1998 Disney on Ice production of *Beauty and the Beast*.

**MARDI JENNINGS** (Stage Manager) will join the Australian Dance Council New South Wales as Director in January 2003. She is a graduate in art history from the University of Adelaide and has performed and competed at a national level as a figure skater, and as a dancer with Diwali Dance House and as an independent artist, producing Australia's first ice theatre performance, *Alchemy*, for the Australian Festival for Young People in 1995. Since joining the Australian Dance Council in South Australia as general manager in 1997, she has been involved in developing a range of initiatives including the South Australian Choreographic Laboratory, providing space and infrastructure support for the independent dance sector and continues to teach on ice dance classes in South Australia. Mardi has also worked for and in partnership with the Australian Dance Theatre, Adelaide Fringe Festival and Adelaide Festival of Arts.



**DAPHNE JOHNSON** (Apprentice), from Warren, Pennsylvania, has been skating for the past 11 years in Jamestown, New York with coaches Kirk Wyse and Lenel Van Den Berg. In the past she has competed twice at the Junior Olympics and twice at Eastern Sectionals. Daphne has her Gold Test in Moves in the Field and Freestyle and hopes to receive her gold in Ice Dancing. She has coached private and Learn to Skate classes in Jamestown as well. She was a featured performer at the Skating Academy's annual performance of Excellence on Ice. Daphne now resides in Manhattan where she studies Communications at New York University.

**DAVID LANDER** (Lighting Designer) is in his seventh year in collaboration with Ice Theatre of New York. His experience with theatrical lighting is extensive, including lighting Broadway's *Dirty Blonde* (2000 Drama Desk Nomination) and David Henry Hwang's production of *Golden Child*, both directed by James Lapine. He has designed lighting off-Broadway and regionally in the US. This past summer David was the resident lighting designer at the St. Louis MUNY, America's oldest and largest outdoor Musical Theatre. Internationally, David has lighted theatrical productions in the UK and in Asia. David's lighting designs can also be seen in restaurants in New York City and amusement park attractions in Florida and California.

**DAVID LIU** (Guest Artist & Choreographer) was born in Taiwan and immigrated to the United States at the age of six and began studying dance and figure skating at the age of eight. He auditioned for New York City Ballet's School of American Ballet (SAB) and was accepted on full scholarship. He was under the tutelage of Richard Rapp and Andre Kramarevsky. He was later promoted by George Balanchine to be among a small group of boys to form the first "Special Class" at the School of American Ballet under the intensive training of the late Stanley Williams. After finishing his dance training at SAB, he pursued his skating career and competed at three Olympic Games for his native country, Taiwan. Mr. Liu teaches, choreographs and performs in both skating and dance. He has been invited to perform and give workshops and intensive classes in the United States, Taiwan, Japan, Hong Kong and Finland. His recent choreographic works include - *3's a Game* Now *4 Play* for the Hong Kong Ballet's Choreographic Workshop and *Chix and Quacks* for the City Contemporary Dance Company. He performed with the City Contemporary Dance Company's production of *PLAZA X* choreographed by Helen Lai, which featured both modern dance and skating. Last summer he choreographed a new dance work, *To be Dancers/ To be Determined*, produced by Cloudgate 2 Company for the National Institute of the Arts in Taiwan.

**KIMBERLY NAVARRO** first performed in a professional ice show at the age of nine. Together with her partner Rob Shmalo, Kim placed sixth in Championship Dance in 2002 US Nationals, and was an alternate for the World Team and the 2002 Olympics in Salt Lake City. Kim's first senior international competition was

the 2001 Golden Spin Competition in Zagreb, Croatia; she recently came back from the international competition in Oberstdorf, Germany. Besides ice dancing, she has also performed throughout the world in the inline skating show *Extreme Wheels Live*. Kim has been featured in seven national commercials and performed at Euro Disney in France. She is now in her third year at Columbia University.

**MOIRA NORTH** (Founder/ Director), named one of the 25 Most Influential Names in Figure Skating by International Figure Skating Magazine in 1998, has been a driving force in the development of figure skating as a performing art. Since founding Ice Theatre of New York in 1984, she has been a catalyst in the development of other artistic ice skating companies in both Canada and the US. Moira and partner Patrick Dean skated Ice Theatre's first work, a collaboration with dance choreographer Marc Bogaerts which won them first place in the 1984 Professional Championships in Jaca, Spain. In her subsequent work as Ice Theatre Director, Moira has continued to integrate contemporary dance into the repertory of ice choreography. She has studied several dance forms, including the Martha Graham technique, Japanese Butoh with Sankai Juku, and Haitian and African dance. Moira is a member of the Professional Teaching Staff at Sky Rink/ Chelsea Piers, and previously served as co-director of the Sky Rink Skating School. Moira's artistic credits include teaching actress Ileana Douglas to skate for her role in the film *To Die For*; teaching and choreographing a skating scene in the film *The Preacher's Wife* with Whitney Houston and Denzel Washington; choreographing five productions of *Montreal Fashions on Ice* for the Quebec Delegation at Rockefeller Plaza; and choreographing the opening ceremonies for both the National Hockey League All-Stars Game and World Cup Hockey. She also served as creative consultant for Arts & Entertainment's *Winter Solstice on Ice*, a television special aired during the 1999 holiday season.

**BRUCE ROBERTS** (Production Manager) is happy to return to Ice Theatre of New York for a second season. Bruce has managed productions both on- and off-Broadway as well as venues around the country. Broadway productions include *Having Our Say*, *Accomplice*, *Solitary Confinement* and *Magic on Broadway*. Nationally he has managed productions at the Black Arts Festival in Atlanta, Georgia, *Cole Porter... No Regrets* in Minneapolis and various productions throughout Baltimore, Washington and New York. As president of Lone Hill Production, his company has staged grand openings, banquets and special events for some of the leading companies in the US.

**LUCINDA RUH** (Guest Artist) was born in Zurich, Switzerland, but has lived in cities throughout the world, including Paris, Tokyo, Toronto, San Francisco, Harbin (China) and Beijing. She is fluent in four languages: German, French, Japanese and English; she also knows some Chinese. Lucinda started skating at age five and is now considered one of the finest spinners in the world. In fact, her 270 revolutions per minute have earned her the nickname "Queen of Spin." She has worked with Toller Cranston, Christy Ness and Oliver Höner. She made her mark in the



1999 World Championships in Helsinki, and was invited to tour with the German Stars on Ice afterwards. Lucinda's electric performance at the 2000 World Professional Championships in Washington, D.C. netted her a standing ovation from the crowd, a third place finish and further confirmed her place in the top echelon of professional skaters. Indeed, Lucinda was recently named as one of International Figure Skating Magazine's top 25 "Most Influential" people in skating. She recently finished her debut season with *Stars on Ice* and will be in *Divas on Ice* this fall.

**BREANNE SCULLY** (Apprentice) began skating at the age of 5. She is currently in her junior year of high school in her hometown of Erie, Pennsylvania. For the past 4 years she has been a featured performer with Excellence on Ice, the annual performance of The Skating Academy in Jamestown, New York where she has been coached since 1996 by Lenel van den Berg and Kirk Wyse. She is a 2001 North Atlantic Regional Champion, and competed at the Junior National Championships in Westminster, Colorado. She has also been a guest skater at local ice shows in her hometown of Erie. Currently competing at the Novice level, she has her Gold Test in Moves in the Field, and Pre-Gold dance test. Her future goals include competing at Nationals and becoming a choreographer.

**ROMAN SEROV** (Guest Artist) is originally from Moscow, Russia. Coached by Victor Kudriavtsev, Roman placed 4th at the most recent Russian Nationals and was Olympic alternate in for the 2002 Games at Salt Lake City. He placed 1st at the Finland Trophy, 2nd at the Cup of Russia, 3rd at Trophée Lalique, and was a three-time champion at the Golden Spin Competition in Zagreb, Croatia. Roman will be competing for the United States this season, and is currently training in Hackensack, New Jersey.

**JOANNA MENDEL SHAW** (Choreographer) is also a teacher and a movement coach. Her creative partnerships for dancers and athletes include work with gymnasts, in-line skaters, equestrians and ice skaters. Since 1998 Ms. Shaw has been investigating partnering of dancers with riders and their horses. *Dancing with Horses* has gained national recognition for its theatrical fusion of equestrian dressage and dance. Shaw has created four works for Ice Theatre including *Appalachia Waltz*, which she co-choreographed with Doug Webster. Ms. Shaw's dance choreography has been commissioned by colleges and universities throughout the country. Her work has been presented in New York at Dance Theatre Workshop, St. Marks, Joyce SOHO and the 92nd Street Y. She is the recipient of two NEA Choreographic Fellowships. Ms. Shaw has taught on the faculty at University of Washington, NYU/Tisch, Princeton, Mount Holyoke College and Montclair State. She is currently on the faculty at The Ailey School/Fordham. Her international teaching includes touring in Hungary, Wales and Korea and extensive residencies in Switzerland and Scotland.

**ALYSSA STITH** was born and raised in West Point, NY and has spent the major-

ity of her formative years on the ice as a competitive figure skater. She began dancing in 1996 while touring with Living the Dream Theatre Company and eventually earned her BA with Distinction in Dance from Ohio State University in 2000. Since then she has been pursuing her goal of translating dance to ice while training and performing in both areas. Upon her return to New York, Alyssa has been performing regularly with Ice Theatre of New York, including in their on-stage performances in Detroit and Colorado, and represented Ice Theatre in the Italian Tour of Champions 2001. She recently returns from Rory Flack Burghart's *Ebony on Ice* in Chicago. Off the ice she performs with Andrea Woods (former member and rehearsal director of Bill T. Jones/Arnie Zane Dance Company) and with Heather Harrington. Alyssa also teaches skating and dance for the Figure Skating in Harlem program, and coordinates Ice Theatre's 'Learn to Ice Dance' program at Riverbank State Park. In addition, she choreographs and polishes programs for competitive figure skaters.

**DAVID TANKERSLEY** is a two-time US National Pair Champion, with competitive experiences both nationally and internationally. He recently joined the Ice Theatre ensemble in the recent *Stars Stripes & Skates* performance at Madison Square Garden performing *On the Town*. David has recently rediscovered a deep love and appreciation for the art of figure skating after emerging himself exclusively in modern dance and musical theatre for the last 5 years. David would like to thank Moira and all the beautiful skaters of Ice Theatre of New York, and to thank Doug and David for their great choreographies.

**WAKA WATANABE** (Dancer) was born and raised in Tokyo Japan, where she began her dance training. She graduated cum laude from SUNY Purchase College with a B.F.A. in Dance. While at the college, she was selected as a member of Purchase Dance Corps to perform in the International Dance Festivals in China, Taiwan, France, Hong Kong, and at Alice Tully Hall at Lincoln Center. She continued her training at Merce Cunningham School with a merit scholarship. She has been dancing with Peter Pucci since 1997 and has toured nationally and internationally. She also dances with JoAnna Mendl Shaw and Michael Mao, and has worked with several companies in New York City, including Douglas Dunn, Tysan Dance, Pink Inc., Forward Motion Theater and Fred Ho.

**DOUGLAS WEBSTER** (Associate Artistic Director) is currently the Associate Artistic Director of the Salt Lake City Sports Complex, Associate Artistic Director of The Ice Theatre of New York, and a member of the Program Development Committee for the USFSA. Recently, he choreographed the Opening Number of the Sun Valley Ice Show and the Opening and Closing Numbers for the *Stars, Stripes and Skates* benefit at Madison Square Garden. His coaching highlights include Lucinda Ruh's World Professional Debut and Alizah Allen's tenth place finish in Senior Ladies at the National Championships in 1997. He has choreographed pieces for Lu Chen, Elena Leichenko, Lucinda Ruh, Elena Leonova and Andrei Khvalko, Anita Hartshorn and Frank Sweiding, and many National and



International competitors. Douglas also choreographed the Ice Theatre of New York segments in the A&E television special *Winter Solstice on Ice*. His professional performing career has spanned fifteen years during which he has been a featured skater in *Festival on Ice* with Scott Hamilton and John Curry, *Footloose on Ice* with Nancy Kerrigan, the Opening and Closing Ceremonies of 2002 Winter Olympics, Disney television specials and many commercials. He also had the fantastic opportunity to partner five time National Dance Champion Judy Blumberg in a portion of her professional career. Douglas is glad to have planted himself in Salt Lake City and he is excited to share the development of the figure skating program at the SLC Sports Complex.

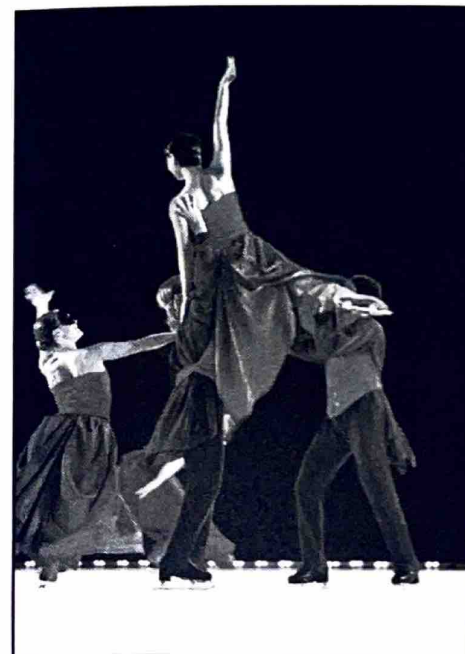
**SUSAN WILSEY** has been performing with Ice Theatre of New York for 6 years. She has been skating professionally since the age of 15, performing in ice shows around the world including the Ice Capades, the world-renowned Sun Valley ice shows, the Nancy Kerrigan Christmas tour, and numerous television specials. Most recently she had the pleasure of performing in the opening and closing ceremonies of the 2002 Olympics in Salt Lake City. She is happy to be in New York City, where she completed her degree in Art History at Columbia University, and doing what she loves the most, skating.

On Sale at the Ice Theatre  
merchandise booth:

Ice Theatre T-shirts  
(black & white)  
\$15.00

*Forever Two as One:*  
*Tai Babilonia & Randy*  
*Gardner*  
by Martha Kimball  
\$ 49.95

*Ice Cream*  
by Toller Cranston  
\$ 24.95



Ice Theatre ensemble in  
*The Draughtmen's Contract* by Elisa Monte.  
Photo by Diane Bidermann

Skating's Best Kept Secret is out

John Zimmerman • Kyoko Ina • Jason Dungen

Sarah Hughes • Michael Weiss • Beata Handra • Charles

**TANIA BASS**

Skating Catalog  
[www.taniabass.com](http://www.taniabass.com)

1-800-958-2642

- Original Designs
- Latest Trends
- Newest Colors

671 Ninth Avenue, New York, NY 10036  
212-246-2277 • 212-246-0721(fax)  
E-mail: [taniabass@aol.com](mailto:taniabass@aol.com)

Sinck • Kim Navarro • Robert Shmale

## 2002 HOME SEASON STAFF

### Executive Producer

Moira North

### Associate Producer

Jirina Ribbens

### COORDINATOR & PR

Kitty Clark

### LIGHTING DESIGN

David Lander

### PRODUCTION MANAGER

Bruce Roberts

### STAGE MANAGER

Mardi Jennings

### PRODUCTION ELECTRICIAN

John D. Mulkey

### BOARD OPERATOR

Sarah Thiboutot

### FOLLOW SPOT OPERATORS

Lazarus Nazario  
Mark Simmons  
Micah Eisenmann

### CREW

Jeff Dobson  
Derek Gerlach  
John Haaaass  
Dan Hansel  
Elanit Kayne  
Andrew Whitehead  
Michael Zinberg

### LIGHTING EQUIPMENT

Fourth Phase

### VIDEOGRAPHER

Tony Seva

Synchronized Team Dresses

Custom Design Competition Dresses

Rhinestone Applications

**Dedication in All-American Skatewear**

**US icewear**

[www.usicewear.com](http://www.usicewear.com)

**US**

734th Street • 4th Floor • Brooklyn • NY 11232 • USA  
Contact: Susy Hung • Mobile: 973.615.3765





# BOARD OF TRUSTEES

William Beekman <i>Chairman</i>	R. Palmer Baker <i>Vice Chairman</i>	Moir North <i>President</i>	Mary Gaillard <i>Treasurer</i>	Jirina Ribbens <i>Secretary</i>
------------------------------------	---	--------------------------------	-----------------------------------	------------------------------------

George Akst	Kathlin Feuerstein	Rhea S. Schwartz
William J. Candee, III	James C. Goodale	JoAnna Mendl Shaw
Eri Chiang	Ruth Legon	Jan Staller
Chip Connell	Lea Ann Miller	Adele Hall Sweet
Joan Balogh Erdheim	Caroline Moore	Debra Lewin Weiner
Peter F. Eurich	Marilena O'Neill	Doug Wilson
	Mitchell Rubin	

ICE THEATRE OF NEW YORK WOULD LIKE TO THANK THE FOLLOWING INDIVIDUALS  
FOR SUPPORT OF THE 2001-02 PERFORMANCE SEASON:

## GUARDIAN ANGELS (\$5,000 OR MORE)

PALMER BAKER	JOAN SCRIBNER
WILLIAM BEEKMAN	ANGELO SILVERI
WILLIAM CANDEE III	LISA WEBSTER

## BENEFACTORS (\$2,500 OR MORE)

JOAN ERDHEIM	DENNIS & MARILENA O'NEILL
KATHLIN FEUERSTEIN	CAROLINE & PETER MOORE
ANNIE GOODMAN	JAMES PAPPAS
DEBBIE GORDON	JAN STALLER
ARNOLD GUMOWITZ	ADELE HALL SWEET

## ICE ANGELS (\$1,000 OR MORE)

GEORGE AKST	GAYE ELLINGTON	MITCHELL RUBIN
ERI CHIANG	STEPHEN EPSTEIN	AUDREY & MARVIN SCHEIN
JAY COLTON	PETER EURICH	JONATHAN STINE
JANET & LEONARD	MARY GAILLARD	NANCY STREETER
CONNOLLY	SAUL & IRIS KATZ	RICHARD STRUSE
SONJA CORBIN	SOON IM KIM	STEPHEN & MADDIE TOBIAS
THEODORE DANFORTH	RUTH LEGON	VERA WANG
ALFRED DEVENDORF	VINCENT & ANN MADONIA	DEBRA WEINER
PETER & SONYA DUNFIELD	SUSAN & BILL PEREIRA	

## PATRONS (\$500 OR MORE)

GRACE ALLEN	STEPHEN & PATRICIA	SYLVIA RUH
ROSE AUSLANDER &	ERLANGER	RHEA SCHWARTZ & PAUL
RICK MOORE	ROBERT & DIANE FAGIOLA	WOLFF
FRED BAZZINI & CAROLINE	SUSIE GHARIB	ANGELA TING
ZIMMERMAN	SUSAN HARRIS	GERTRUDE VANDERBILT
DICK BUTTON	FRANK & DEBORAH HUDAK	WYNNE WEINER
CHIP CONNELL	JOAN B. KAUFMAN	DOUG WILSON
ROBERT DUSTIN	ROBERT MELLINS	
VIOLET EAGAN	HERMIA NELSON	

## SPONSORS (\$250 OR MORE)

JOHN ACOSTA	JACOB PETER KOVNER	AUDREY & MARVIN SCHEIN
PRISCILLA ANDRADE	RANDALL LANE	STEVEN SCLAROFF
RUBY ANDRADE	SANDRA LOOSEMORE	JOANNA MENDEL SHAW
JOHN BRYAN ANTHONY	OLGA MALINOVA	KENNETH SHELLEY
JACK BATMAN	THERESA MULLARKEY	ERWIN & PEARL STALLER
KIM & ROLLA CAMPBELL	BARTON NISONSON	AJA ZANOVA STEINDLER
CHRISTOPHER CASTROVIEJO	JAY OGDEN	JOEL STERN
REBECCA CLIFFORD	GEORGE OLSEN & KAREN	DAVID TEWKSBURY
ROBERT COHEN	BARTH	LEE & MARVIN TRAUB
MARY EAGAN	CARL OLSSON	HELENE VICTOR
JEFFREY HIRSCH	NANCY QUAIFE	TRACY WATTS
JENNIFER JORDAN	JIRINA RIBBENS	SUE WONG
BETH KAUFMAN	MAUREEN & JIM ROBINSON	ARI ZAKARIAN

## ASSOCIATES (\$100 OR MORE)

MARYSE ALBERTI	ENID COLEMAN	SHIRLEY LOEDEL
MAGDELAINE S. ANTHONY	JOEL FAIRMAN	JOSEPH KASPUTYS
W. GRAHAM ARADER	WENDY FRANK	NOEMIE RATTRAY
DENISE BEAUMONT	VIRGINIA HOLDEN GLOVER	LISA MAZIA RECHSTEINER
BONNIE BERKOW	MAURICE GOODMAN	EARL SAMUEL
LUCY JOYCE BRENNAN	JOHN GREENFIELD	JOSEPH SIEGEL
RONALD BUNKER	RICHARD & SHARON	CHRISTY WELKER
BARBARA CAMP	HUROWITZ	ROBERT & SALLY WINTER
KEITH CHAMPAGNE	PRESCOTT JENNINGS, JR.	

## FRIENDS (\$50 OR MORE)

VIRGINIA ABRAMS	JANE CURTISS	JUDITH NICHOLS
STEPHEN ADLER	LOUISE FIORE	GABRIELLE PAOLINI
SHIRLEY BERKOWITZ	LINDA HACKETT	BARBARA ANN STAY
JOSEPH BUDNITSKY	BETH HURWITZ	PATRICIA TAYLOR
MARY BUNDY	W. MACY JOHNSON	BARBARA THOMAS
LINNEA CAPPS	TERRI KATZ	RICHARD WALUKANIS
DONALD CARDOZA	FRAN LEVY	ANNE JOYCE WYMAN
PEGGY COLLINS, ESQ.	ANNE MAXFIELD	

And contributions from all of our generous individual contributors!

PHILIP MORRIS  
COMPANIES INC.



For their special efforts, Ice Theatre of New York expresses its deepest gratitude and appreciation to:

Chelsea Piers and Sky Rink  
 Ron Talerico, General Manager • Sky Rink  
 Sid Morgan, Assistant General Manager • Sky Rink  
 Abe Hernandez, Head of Maintenance • Sky Rink

Jack W. Batman, Director of Public Relations • Chelsea Piers

Field House • Chelsea Piers

Sports Center • Chelsea Piers

#### APPRENTICES & INTERNS

Angela Chiang  
 Suzanne McDonald  
 Erin Melikian  
 Annadella Subin  
 Ashley Walker

#### VOLUNTEERS

Priscilla Andrade  
 Ruby Andrade  
 Annie Chi  
 Ellen Cohen  
 Alexis Copland  
 Carin Crow

Betsy de Felice  
 Andrea Diamond  
 Nancy Gannon  
 Bev Hasiuk  
 Beth Hurwitz  
 Marylyn Meyerson  
 Gail Mitchell  
 Joyce Mola

Students of J. M. Shaw  
 Ruth Rosenberg  
 Lucy Simanjuntak  
 Pam Spence  
 Charlotte Thorp  
 Adrienne Watkins  
 Sally & Bob Winter

#### SPECIAL THANKS TO:

Keith Champagne  
 Kitty Clark  
 Peter Eurich  
 Mardi Jennings  
 Ron Kraut  
 Jirina Ribbens  
 Scott Schwartz  
 Lenel Van Den Berg  
 Tracy Watts  
 Kirk Wyse

Jamestown Ice Arena  
 New Roc Ice Skating Center  
 The Rink at Rockefeller Plaza

Special thanks to the generous members of the Board of Directors of Ice Theatre of New York!

Ice Theatre of New York greatly appreciates support during the 2001-02 season from the following corporate, foundation and government entities:

Abigail H. Hess Interiors, Inc.  
 Akst & Akst  
 Arme  
 Bert & Lulu M. Neal Fdn.  
 Bossak Heilbron Charitable  
 Foundation  
 CIBC World Markets  
 Canadian Consulate General  
 in New York  
 Carter, Ledyard & Milburn  
 Constantin Control Associates  
 Curtis McGraw Skating Fdn.  
 Debevoise & Plimpton  
 Del Arbour  
 Desco

Doug Willson Enterprises, Inc.  
 Fleet  
 Forbes FYI  
 Forest Laboratories, Inc.  
 Fotocare  
 Hird Blaker  
 Ice House  
 Insignia ESG  
 Joan B. Kaufman Interiors  
 Litho Partners  
 Merrill Lynch  
 Morrison & Foerster  
 New York Rangers  
 NE Amateur Skating Fdn.  
 NY State Council on the Arts

NYCT/ Lila Acheson Wallace  
 Theatre Fund  
 Nu Skin  
 Philip Morris  
 Ruskin, Moscov, Evans &  
 Faltischek  
 Silverite Construction  
 Skating Club of New York  
 Steven Sclaroff  
 Swarovski  
 TXX  
 Vera Wang  
 Wempe/ Rolex  
 Xtreme Ice

Matching gifts from:

AOL Time Warner, Inc., Clorox, and IBM International Foundation

**This event is made possible by public funds from the New York State Council on the Arts, a state agency and by public funds from the NYC Department of Cultural Affairs.**



#### ICE THEATRE OF NEW YORK, INC.

Chelsea Piers, Pier 62, Room 312  
 New York 10011 • 212.929.5811 • 212.929.0105 FAX  
 www.icetheatre.org • itny@icetheatre.org

See us on the ice at:

HOLIDAY ON THE HUDSON  
 Sky Rink, Chelsea Piers  
 23rd St. and the Hudson River  
 Friday, December 13, 2002 at 7 PM

RIVERBANK TREE LIGHTING  
 at the Riverbank Skating Complex  
 145th Street & Riverside Avenue  
 Saturday, December 14, 2002 at 4 PM

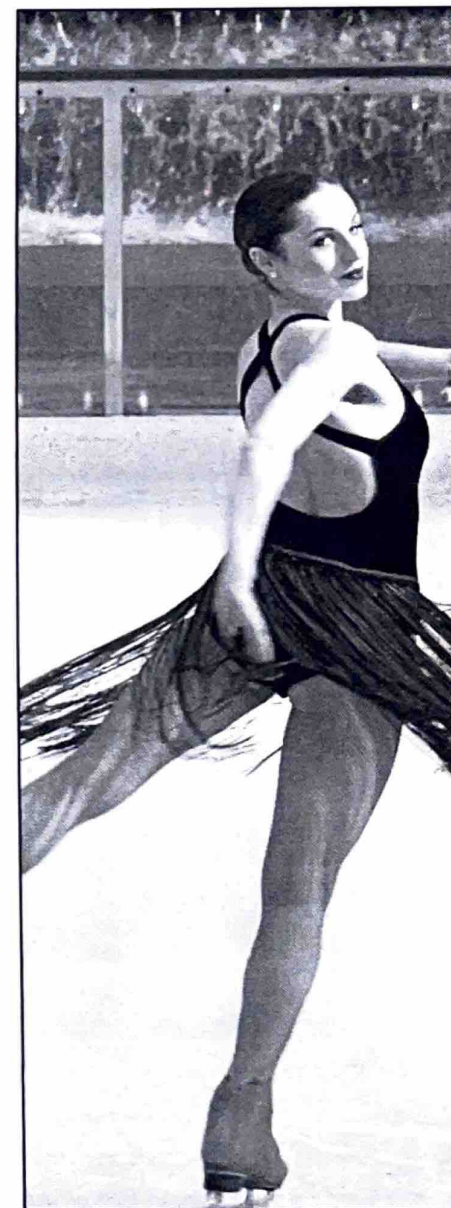
THE 17th CONCERT SERIES AT  
 THE RINK AT ROCKEFELLER PLAZA  
 Wednesday, January 29, 2003 at 1 PM  
 Wednesday, February 26, 2003 at 1 PM  
 Wednesday, March 19, 2003 at 1 PM  
 (Raindate the following day)

NEW WORKS & YOUNG ARTIST SERIES  
 at the Riverbank Skating Complex  
 145th Street & Riverside Avenue  
 Thursday, February 27, 2003 at 10:30 AM  
 Thursday, March 6, 2003 at 10:30 AM  
 Thursday, March 20, 2003 at 10:30 AM

THE JOYCE  
 August 19-24, 2003  
 To be confirmed

For more information about the Company,  
 please visit us at our website:  
 www.icetheatre.org

Florentine Houdiniere in Gitane  
 Photo by Jay Colton





Ice  
Theatre  
of  
New York

